

ENERGY *THAT* **NEVER** **FADES**

SECURE YOUR SOLAR INVESTMENT WITH
TRUSTED FASTENERS!



NAV RATNA
Metal & Alloys

CONTACT US

+91 98194 95121

WWW.NRFINDIA.COM

ADDRESS: 307, 3RD FLOOR ,
39, J S S ROAD OPERA HOUSE,
PAREKH MARKET PREMISES CO-OP SOC LTD.
MUMBAI -400004



NAVRATNA METAL & ALLOY HIGH-QUALITY FASTENERS FOR SOLAR PANEL INSTALLATION



Fasteners are a crucial component in solar panel mounting systems, ensuring panels are securely fixed and withstand harsh environmental conditions. Navratna Metal & Alloys provides a wide range of high-strength, corrosion-resistant fasteners designed specifically for solar panel installations. Our product lineup includes stainless steel bolts, nuts, washers, clamps, U-bolts, and self-drilling screws, all manufactured using premium-grade materials to ensure long-term durability and reliability. These fasteners are engineered to handle extreme weather conditions, including high winds, heavy rainfall, and temperature variations, making them an ideal choice for both roof-mounted and ground-mounted solar systems.

At Navratna Metal & Alloys, we prioritize quality and precision in every product we manufacture. Our fasteners comply with industry standards and offer superior resistance to rust and wear, ensuring a strong and stable foundation for solar energy systems. Whether you require custom fasteners for a specific project or standard solutions for large-scale installations, we provide tailor-made fastening solutions to meet your exact needs. Contact Navratna Metal & Alloys today to explore our complete range of solar panel mounting fasteners and ensure a secure, long-lasting installation.



Lock Nuts

Dia: M6,M8,M10,M12,M16

Grade: 304,316



Channel Nuts

Dia: M6,M8,M10,M12

Grade: 304,316



Hex Nuts

Dia: M6,M8,M10,M12,M16

Grade: 304L,316L



Flange Nuts

Reliable Stainless Steel Fasteners for Secure Solar Installations!



U- Bolts

Dia: M6,M8,M10,M12

Pipe Size: 01 INCH TO 08 INCH

Grade: 304L,316L,420

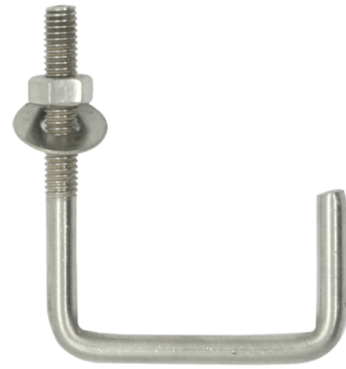


J-Hooks

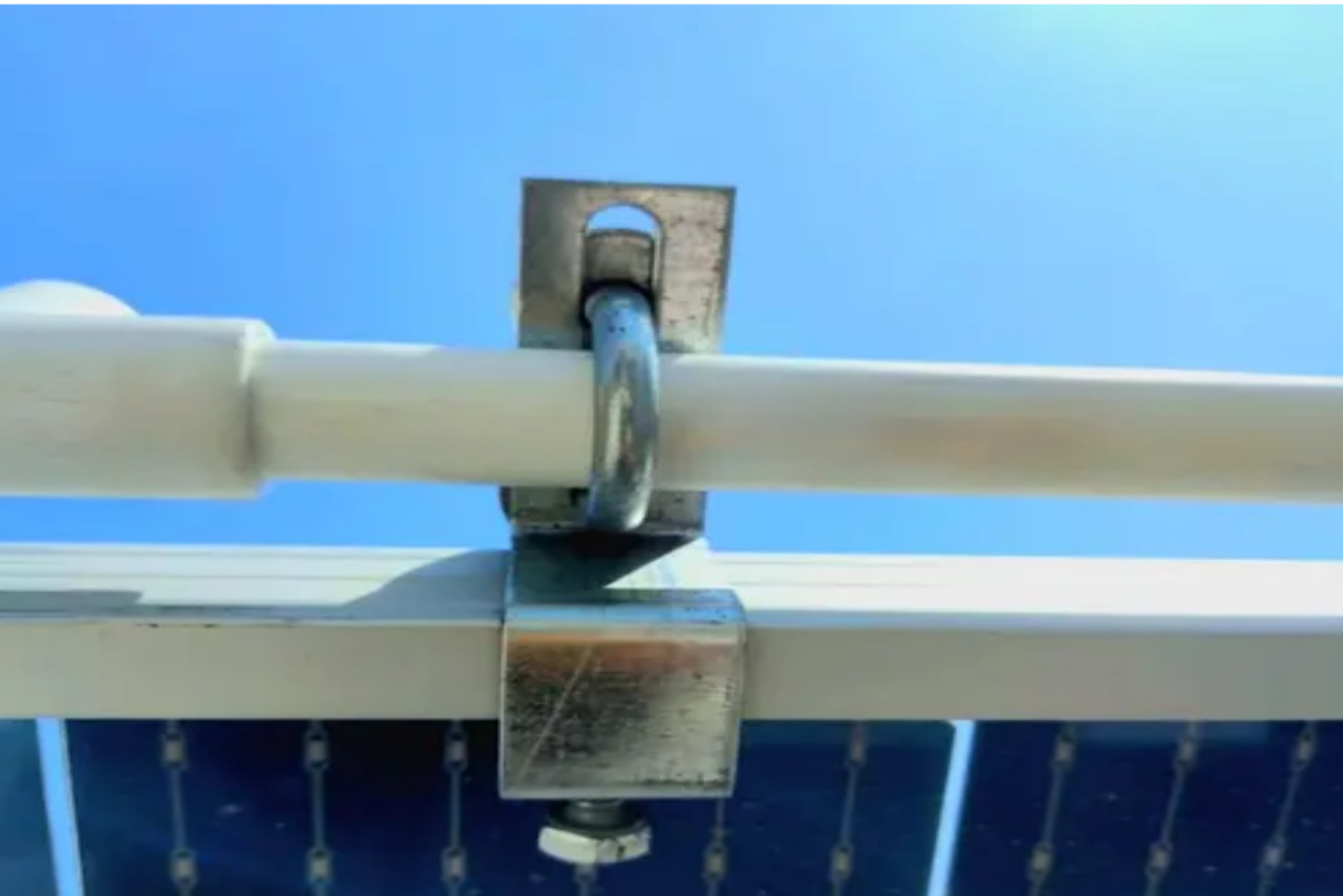
Dia: M6,M8,M10,M12

Sq Pipe Size: 1.5" TO 6"

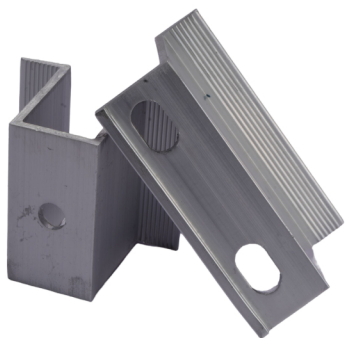
Grade: 304L,316L



J-Hooks



Power Your Solar Setup with Durable Fastening Solutions!



End Climps

Size: 40 X 3 X 60 MM

Material: Aluminium



Mid Climps

25/30/35

Material: Aluminium

Rust-Resistant, High-Strength Fasteners for Solar Panels!



Spring Lock Washers

Dia: M6,M8,M10,M12,M16

Grade: 304L,316L



Flat Washers

Dia: M6,M8,M10,M12,M16

Grade: 304L,316L



Where quality meets reliability in every piece.



Hex Head Bolts

Dia: M6,M8,10,M12,16

Length: 20 MM TO 100 MM

Grade: 304L,316L



T-Bolts

Dia: M6,M8

Length: 20 MM TO 50 MM

Grade: 304L,316L



Wedge Anchor

Dia: M6,M8,M10, M12, M16

Length: 75 MM TO 200 MM

Grade: 304L,316L



The foundation of solar success starts with the right fastener



Allen Head Bolts

Dia: M6,M8,M12

Length: 20 MM TO 50 MM

Grade: 304L/316L



Flange Bolts

Dia: M6,M8

Length: 20 MM TO 50 MM

Grade: 304L/316L



Carriage Bolts

Dia: M6,M8

Length: 20 MM TO 50 MM

Grade: 304L/316L

From rooftop to ground—secure your solar future



Self-Tapping Screws

10,12

Length: 01 INCH TO 03 INCH



Self-Drilling Screws

10, 12

Length: 01 INCH TO 03 INCH

Grade: 410, 304, 316



Your solar system's silent strength—our fasteners.



Dia: M6,M8,M10,M12
Grade: 304L



Anti Theft Nuts

Dia: M6,M8,M10,M12
Length: 15 MM TO 50 MM
Grade: 304L



Anti Theft Bolts

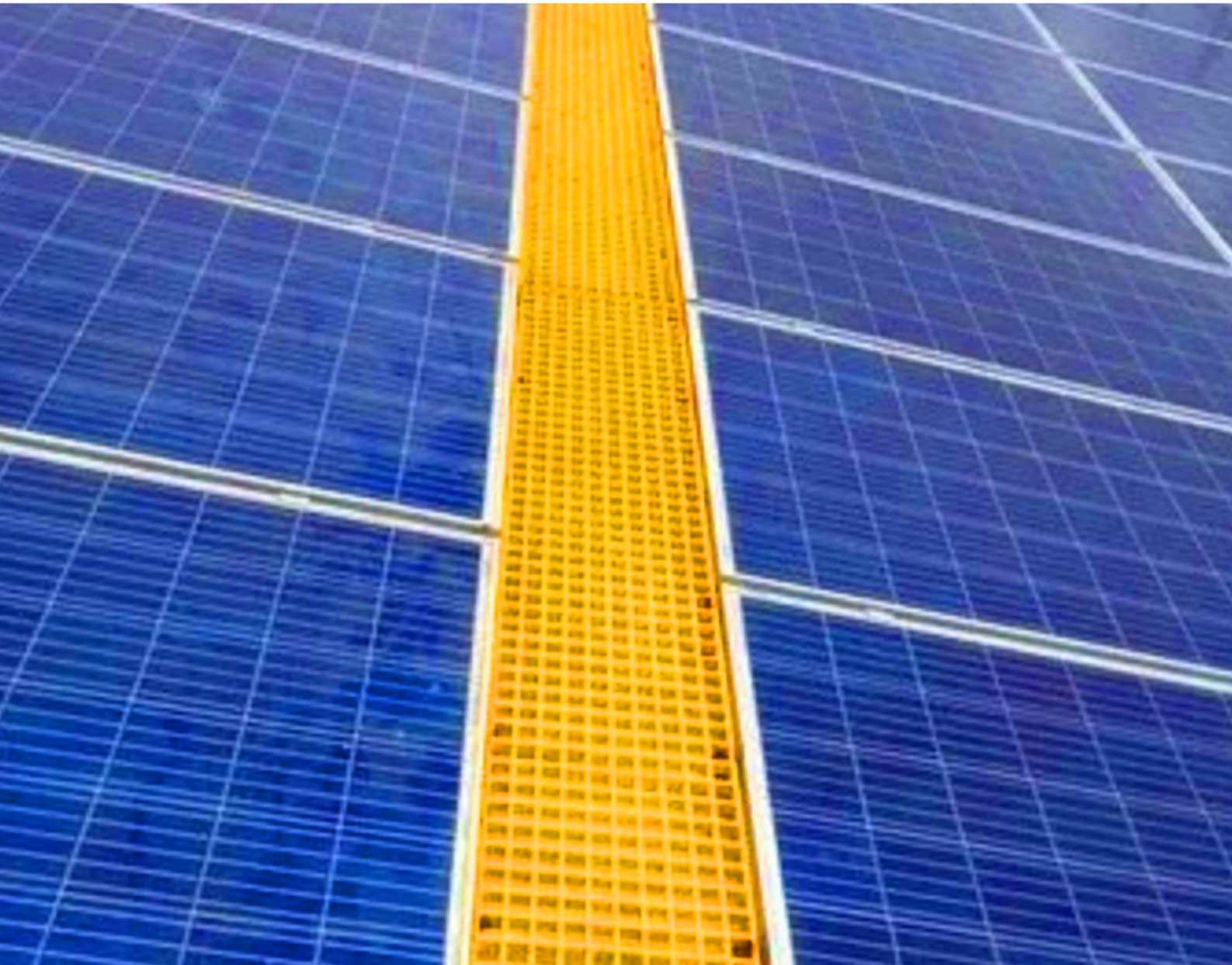
Precision-crafted for seamless solar installations.



FRP Grating Clamp

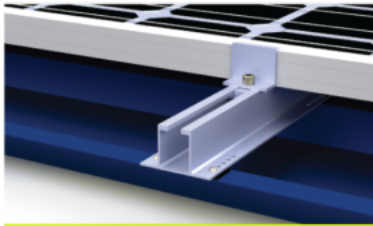
Thickness: 1.5MM

Grade: 304

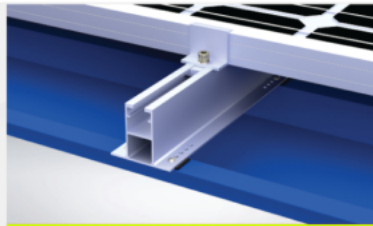


Fasteners that hold strong—no matter the weather.

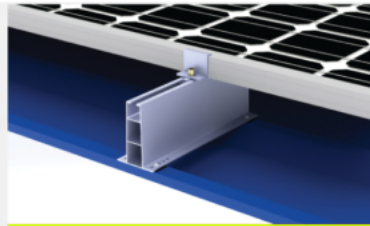
ROOF TOP



MINI RAIL 40 MM



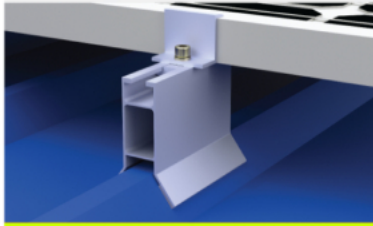
MINI RAIL 60 MM



MINI RAIL 100 MM



KAL-ZIP RAIL



90 MM NON PENETRATIVE RAIL



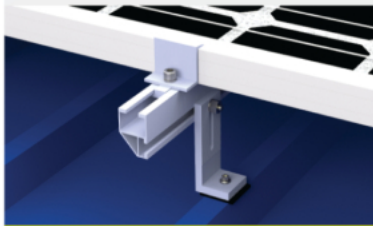
100 MM NON PENETRATIVE RAIL



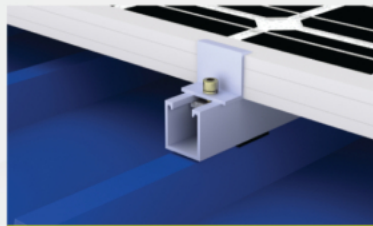
ANGLE SHORT RAIL



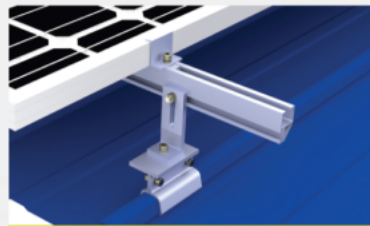
70MM LANDSCAPE RAIL



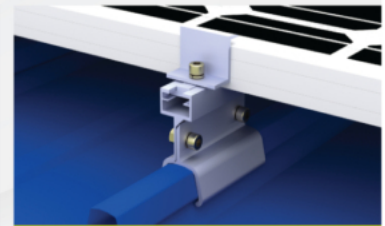
DOUBLE C LONG RAIL



STRUT LONG RAIL



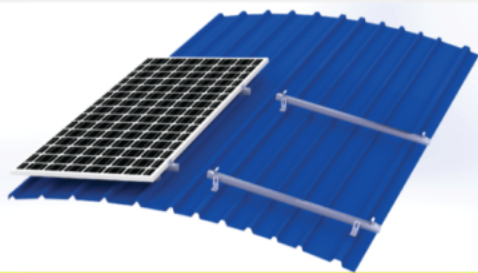
KLIP LOK LONG RAIL



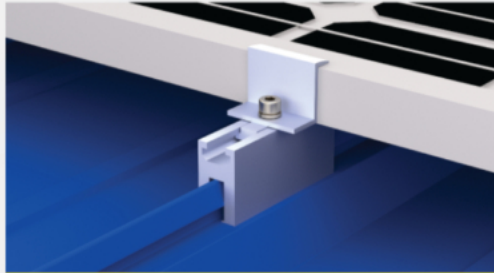
KLIP LOK SHORT RAIL



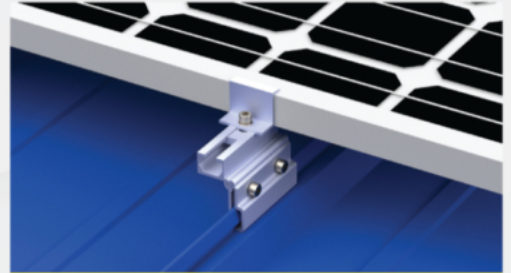
ROOF TOP



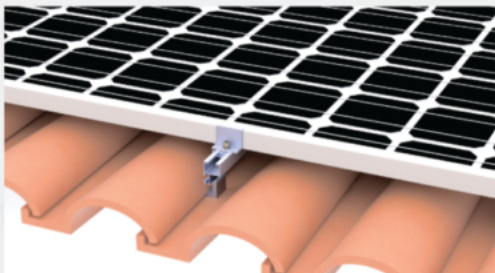
CURVE DOME SHEET-LONG RAIL



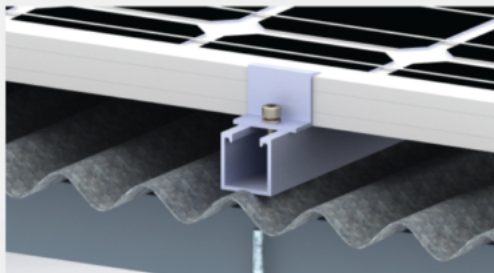
50 MM STANDING SEAM



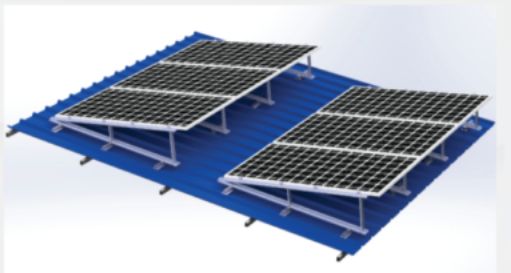
75 MM STANDING SEAM



TILE ROOF - LONG RAIL



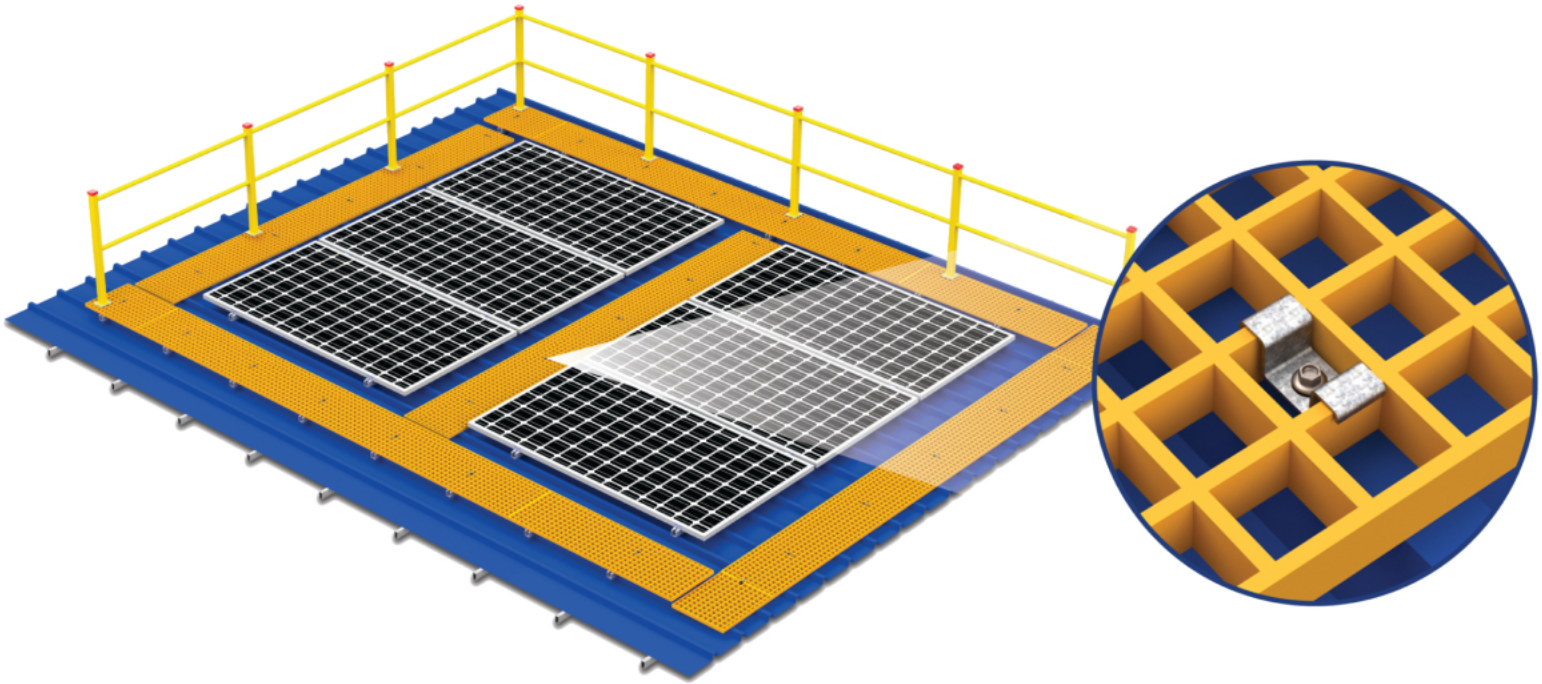
ASBESTOS ROOF - LONG RAIL



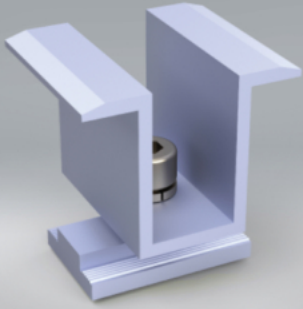
2M REVERSE TILT - NORTH SLOPE



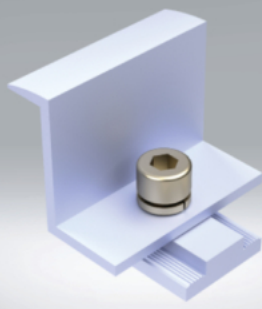
FRP WALKWAY AND HAND-RAIL



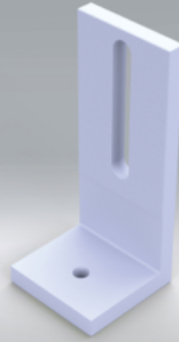
ACCESSORIES



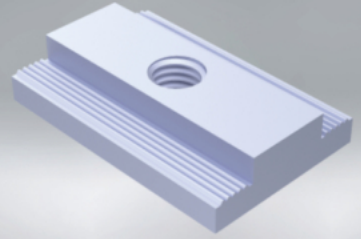
MID CLAMP SET



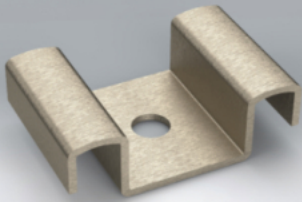
END CLAMP SET



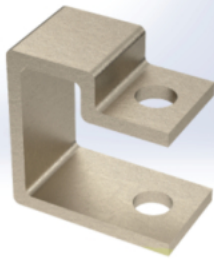
L BRACKET



T NUT



WALKWAY M-CLAMP



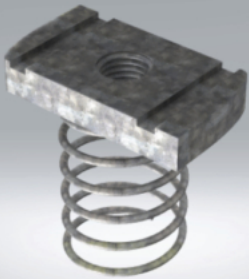
WALKWAY C-CLAMP



FASTENERS



LORD ADHESIVES



SPRING NUT



EARTH STRIPS

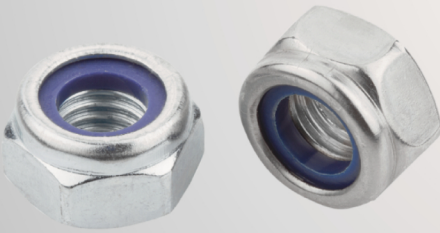


DISPENSER GUN



EPOXY INSULATOR





NAV RATNA
Metal & Alloys

Corporate Office address:

307, 3RD FLOOR ,
39, J S S ROAD OPERA HOUSE,
Parekh Market Premises Co-Op Soc Ltd.
MUMBAI -400004

✉ sales@nrfindia.com
☎ +91 98194 95121

Plant address:

Plant 1: J-294/4, GIDC, UMBERGAON ,
VALSAD, Gujarat,
India - 396171

Plant 2: Surendernagar